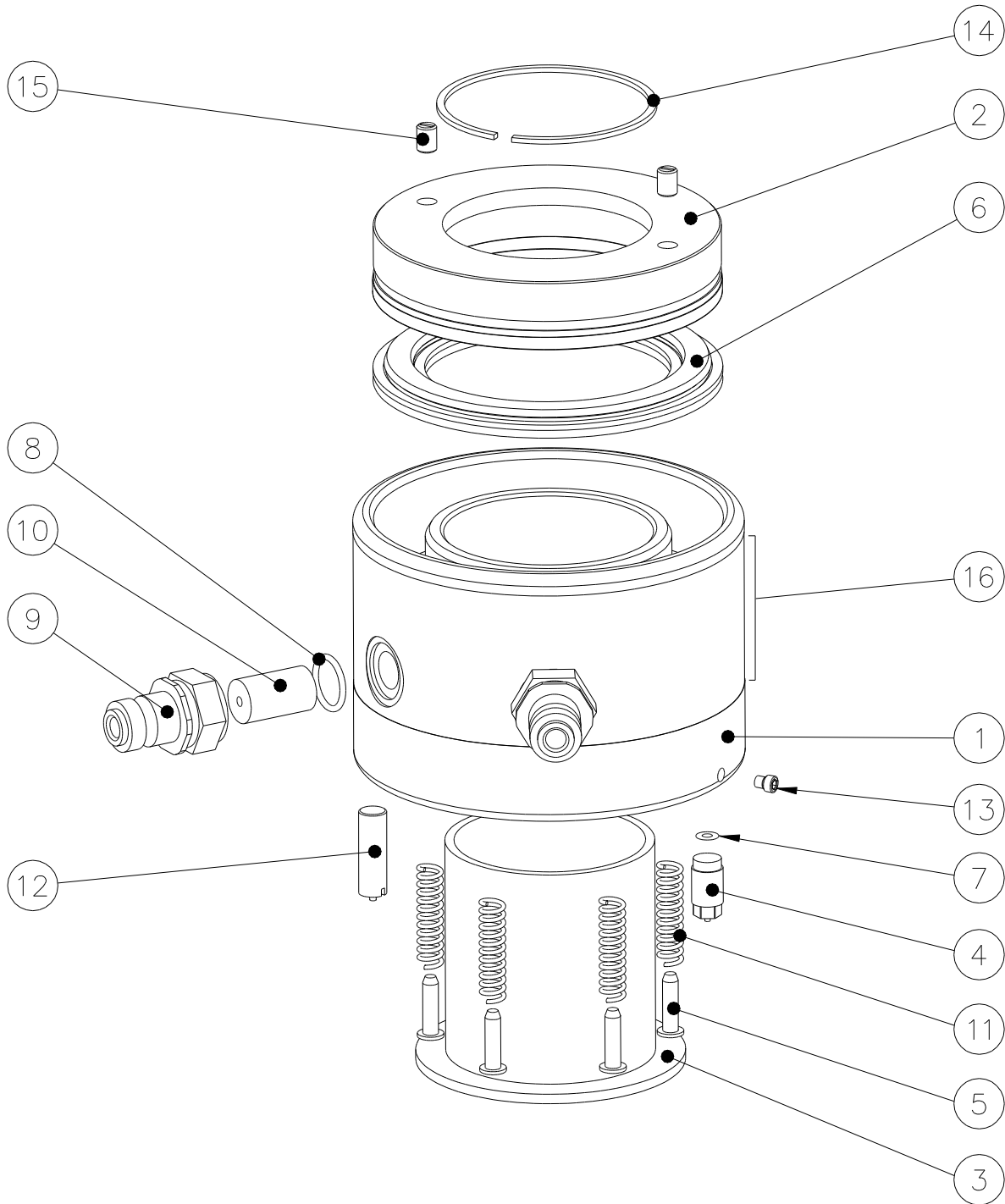


SRT TENSIONER LOAD CELL PARTS LIST

(SINGLE SEAL TYPE - SRT1,2,3)



SRT TENSIONER LOAD CELL PARTS LIST
(SINGLE SEAL TYPE)

SRT LOAD CELL REF : SRT1

ITEM	DESCRIPTION	QTY	PART CODE	
	SRT1 LOAD CELL ASSEMBLY	1	SRTAS010001	
1	SRT CYLINDER	1	SRTCY010001	
2	SRT PISTON	1	SRTPI010001	
3	SRT SLEEVE ASSEMBLY	1	SRTAS010002	
4	SRT RELIEF VALVE	1	SRTRV000001	‡
5	SPRING PIN	4	SRTSP000001	‡
6	SRT SEAL SET	1	SRTSE010001	†
7	SEAL	1	STDSE000001	‡
8	SEAL	2	STDSE000002	*
9	MALE COUPLING	2	STDHC000001	‡
10	ADAPTOR	2	STDHC000003	‡
11	SPRING	4	STDST000001	‡
12	SPRING PLUNGER	1	STDST000005	*
13	SCREW	2	STDFA000001	*
14	CLIP	1	STDRC000001	‡
15	SCREW	2	STDFA000003	*
16	ANTI-SLIP TAPE	1	SRTAT010001	

SRT LOAD CELL REF : SRT2

ITEM	DESCRIPTION	QTY	PART CODE	
	SRT2 LOAD CELL ASSEMBLY	1	SRTAS020001	
1	SRT CYLINDER	1	SRTCY020001	
2	SRT PISTON	1	SRTPI020001	
3	SRT SLEEVE ASSEMBLY	1	SRTAS020002	
4	SRT RELIEF VALVE	1	SRTRV000001	‡
5	SPRING PIN	6	SRTSP000001	‡
6	SRT SEAL SET	1	SRTSE020001	†
7	SEAL	1	STDSE000001	‡
8	SEAL	2	STDSE000002	*
9	MALE COUPLING	2	STDHC000001	‡
10	ADAPTOR	2	STDHC000003	‡
11	SPRING	6	STDST000001	‡
12	SPRING PLUNGER	1	STDST000005	*
13	SCREW	2	STDFA000001	*
14	CLIP	1	STDRC000002	‡
15	SCREW	2	STDFA000003	*
16	ANTI-SLIP TAPE	1	SRTAT020001	

SRT TENSIONER LOAD CELL PARTS LIST
(SINGLE SEAL TYPE)

SRT LOAD CELL REF : SRT3

ITEM	DESCRIPTION	QTY	PART CODE	
	SRT3 LOAD CELL ASSEMBLY	1	SRTAS030001	
1	SRT CYLINDER	1	SRTCY030001	
2	SRT PISTON	1	SRTPI030001	
3	SRT SLEEVE ASSEMBLY	1	SRTAS030002	
4	SRT RELIEF VALVE	1	SRTRV000001	‡
5	SPRING PIN	10	SRTSP000001	‡
6	SRT SEAL SET	1	SRTSE030001	‡ †
7	SEAL	1	STDSE000001	‡
8	SEAL	2	STDSE000002	*
9	MALE COUPLING	2	STDHC000001	‡
10	ADAPTOR	2	STDHC000003	‡
11	SPRING	10	STDST000001	‡
12	SPRING PLUNGER	1	STDST000005	*
13	SCREW	2	STDFA000001	*
14	CLIP	1	STDRC000003	‡
15	SCREW	2	STDFA000003	*
16	ANTI-SLIP TAPE	1	SRTAT030001	

† - Part subject to wear, replace as required.

‡ - Standard spare part, replace if damaged / unserviceable.

* - Contained within Standard Service Kit:

SRT1, 2, 3 Service Kit - SRTSK010001

SRT4, 5, 6 Service Kit - SRTSK020001